



Grandstream Networks, Inc.

CCC602x Series

GWN602x - Quick Installation Guide



Overview

The GCC6020 Series is a powerful all-in-one platform that integrates unified communications, networking, and advanced security features into a single device. Designed for small-to-medium-sized businesses, this series combines the capabilities of four distinct products: a high-performance VPN router, a next-generation firewall, a full-featured IP PBX system, and an enterprise-grade network switch.

These state-of-the-art devices enable the creation and centralized management of wired, wireless, and VPN networks, while providing robust security through built-in firewall functions, DPI, IDS/IPS, and encrypted traffic protection. The embedded IP PBX platform supports both voice and video communications with advanced collaboration tools, making it ideal for modern business environments.

The GCC6020 Series simplifies deployment and ongoing administration by offering unified control of Grandstream Wi-Fi access points, network switches, IP phones, and other endpoints. It supports a wide range of management methods, including Grandstream Device Management System (GDMS), mobile app, local Web UI, CLI, and SSH console.

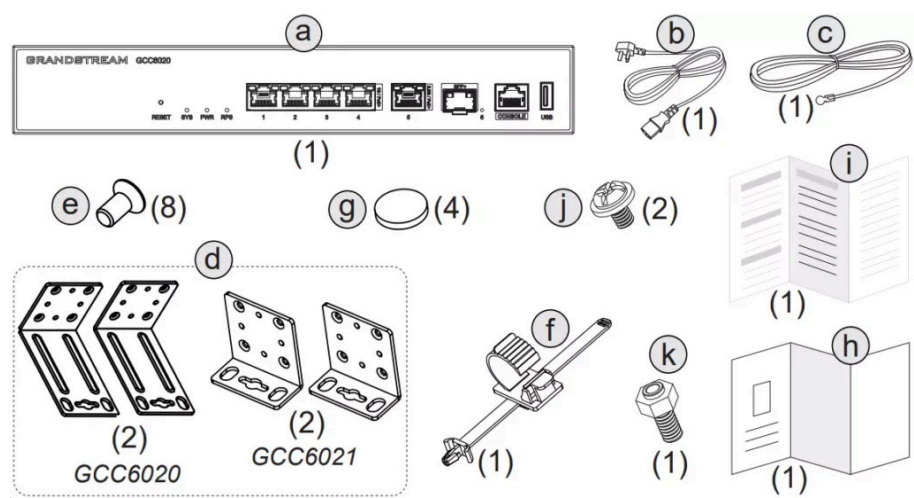
With support for fast provisioning, centralized monitoring, and cloud-based control, the GCC6020 and GCC6021 models make it easier and more cost-effective to deploy secure, scalable, and fully integrated communication networks.

Note:

To manage remotely, use the GDMS platform: www.gdms.cloud

Package Contents

The GCC6020/GCC6021 package includes the following components:



Package Contents

Note:

Bracket style and screw placement may differ depending on whether the device is GCC6020 or GCC6021.

Label	Quantity	Item
a	1×	Main Unit (GCC6020 or GCC6021)
b	1×	Power Cable
c	1×	Grounding Cable
d	2×	Rack Mount Brackets (model-specific)
e	8×	Rack Mounting Screws

f	1×	Power Cord Anti-Trip
g	4×	Rubber Feet
h	1×	Regulatory Information
i	1×	Quick Installation Guide
j	2×	M.2 SSD Screws (top)
k	1×	M.2 SSD Securing Screw (bottom)

Package Contents

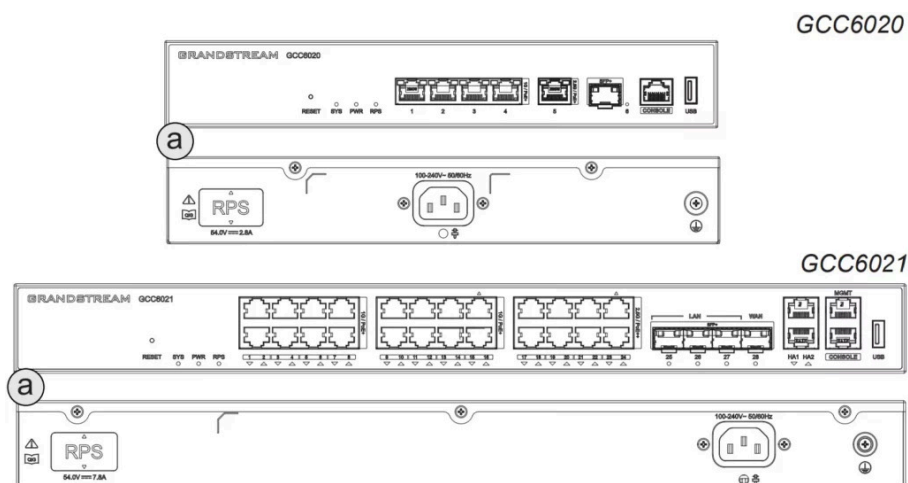
Hardware Overview

The GCC6020 and GCC6021 feature front and rear panels with multiple Ethernet, SFP, USB, and management ports. The exact port layout varies depending on the model.

Each unit includes a standard AC power input and a Redundant Power Supply (RPS) port on the back panel. LED indicators on the front help monitor power, connectivity, and system status.

Note:

Check the label on your device to identify the exact port configuration.



Hardware Overview

Powering the Device

Follow the steps below to properly power the GCC6020/GCC6021:

1. Ground the Device

Attach the grounding cable (c) to the grounding point (a) on the rear panel to prevent electrical surges.

2. Secure the Power Cable

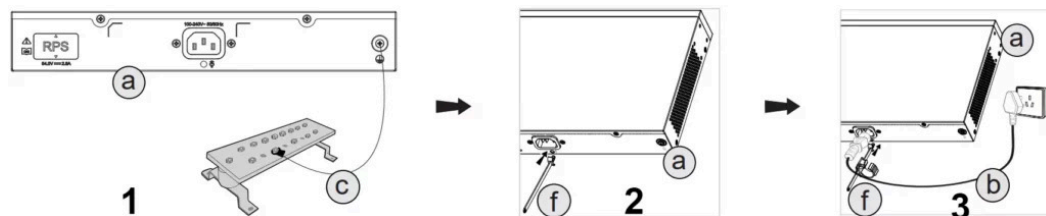
Install the power cord Anti-Trip (f) onto the power socket. This helps prevent accidental unplugging or cable strain.

3. Connect the Power Cable

Plug the power cable (b) into the device, then wrap the Power Cord Anti-Trip (f) around it as shown before connecting to a power outlet.

Note:

Optionally, connect a backup power source to the RPS port for redundancy.



Powering the Device

Rack Mount Installation

To mount the device into a standard 19" rack:

1. Attach the Rack Brackets

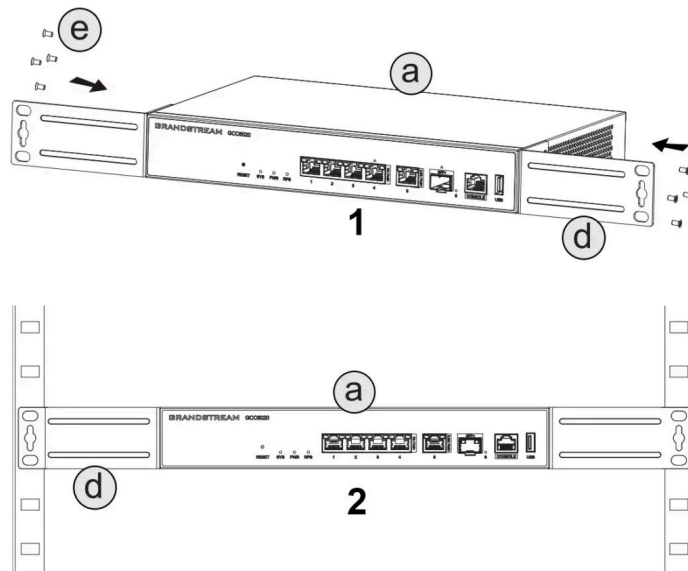
Secure the provided rack mount brackets (d) to both sides of the device (a) using the included screws (e).

2. Install the Unit into the Rack

Carefully align and slide the device into the rack, then secure the brackets to the rack frame.

Note:

Ensure proper airflow around the device and avoid blocking the ventilation areas on the sides.



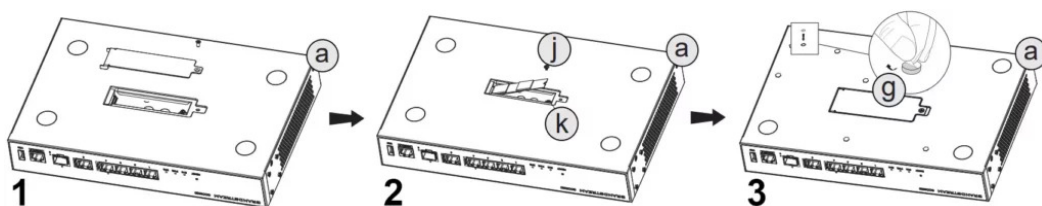
Rack Mount Installation

Installing the M.2 SSD

1. **Access the SSD Slot:** Flip the device upside down to locate the SSD compartment (a). Remove the bottom SSD cover by unscrewing the pre-installed screw.

2. **Install the SSD:** Secure the standoff screw (k) in the appropriate mounting position. Insert the M.2 SSD module into the slot at an angle, then press it down flat. Fasten it using the hold-down screw (j) to secure the SSD in place.

3. **Close the SSD Compartment:** Reattach the metal cover and tighten the original screw to finish the installation.



Installing the M.2 SSD

Safety and Precautions

- Do not attempt to open, disassemble, or modify the device.
- Do not expose this device to temperatures outside the range of 0 °C to 45 °C for operating and -10 °C to 60 °C for storage.
- Do not expose the device to environments outside of the following humidity range: 5-95% RH (non-condensing).
- Do not power cycle the device during system boot-up or firmware upgrade. You may corrupt firmware images and cause the unit to malfunction.
- Appliance coupler is used as disconnect device, the disconnect device shall remain readily operable.

The GNU GPL license terms are incorporated into the device firmware and can be accessed via the Web user interface of the device at my_device_ip/gpl_license. It can also be accessed here: <https://www.grandstream.com/legal/open-source-software>

To obtain a CD with GPL source code information please submit a written request to info@grandstream.com

Refer to online documents and FAQ for more detailed information:

<https://www.grandstream.com/our-products>
