



JR201-FK-AL

- Robust cold-rolled steel housing
- Protection level IP65
- Corrosion resistant hardware
- Unique noise reduction technology for HD calls
- CE, FCC, RoHS, IK10, IP65, ISO9001 compliant

IP65



IK10

HD

MAIN FEATURES

Housed in a corrosion-resistant stainless steel/cold-rolled steel box and manufactured to a high standard, these telephones offer increased resistance to vandalism, and ensure that the primary function of communications is maintained at all times.

Housing has a grounding device and is completely electrically isolated from the internal circuit, with a certain electromagnetic shielding effect, and the voice is clear and loud during the call, without whistling back. Armored "cord" provides additional resistance to vandalism or heavy industrial use.

The series telephones are designed to meet the needs of client who experience loss through vandalism. Ideal for parking lots, prisons, airports, railway, metro, ATM machines, platforms, hospitals, police stations, shopping mall, stadiums, etc.

- Handset telephone, full metal keypad (12keys)
- ABS material handset with noise-cancelling microphone and 83CM armored cord
- The handset supports hearing aid function (compatible HAC receiver)
- Magnetic reed hook switch
- Grey, other colors to special order
- Wall mounting, simple installation

TECHNICAL SPECIFICATIONS

Analogue Specification	
Power supply	Drawn from telephone line
Power Voltage	24 VDC ~ 65 VDC
Power Current	20 mA DC ~ 100 mA DC
Ringer Voltage	48 VAC to 90 VAC (calling frequency 21...54 Hz)
Ringing Volume	Shrill warble tone 80 dBA @ 1 metre typical
Dialing method	PD or DTMF mode can be set via the menu. DTMF mode in accordance with ITU-T recommendation Q.23
Lightning / Transients	Protection to ITU-T k.21 enhanced levels
Programming	Can be programmed remotely by DTMF tone or keypad
Technical Specifications	
Compatible with all the standard PABX servers	
Remote programming—allows you to manage your network from a central location	
Programmable auto hang-up timer	
Support automatic dialing with delay after picking up the phone	
Support scheduled dialing to the central control phone to detect whether the phone is working properly	
Support the telephone line to power external light fixed on the top(no external power supply needed)	
Support one relay to remotely control external devices	
Can be adapted according to the model of the Analogue PABX to support the sequential calling function	
Phone line powered	
Operating temperature -40°C to +65°C / Storage temperature -40°C to +75°C	
M.T.B.F. In excess of 50,000 hours using	

OPTIONAL ACCESSORIES



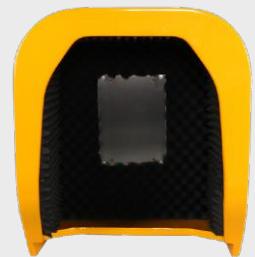
JR-BS-01
Acousto-optic Alarm



JR-LP-02
LED Beacon Light



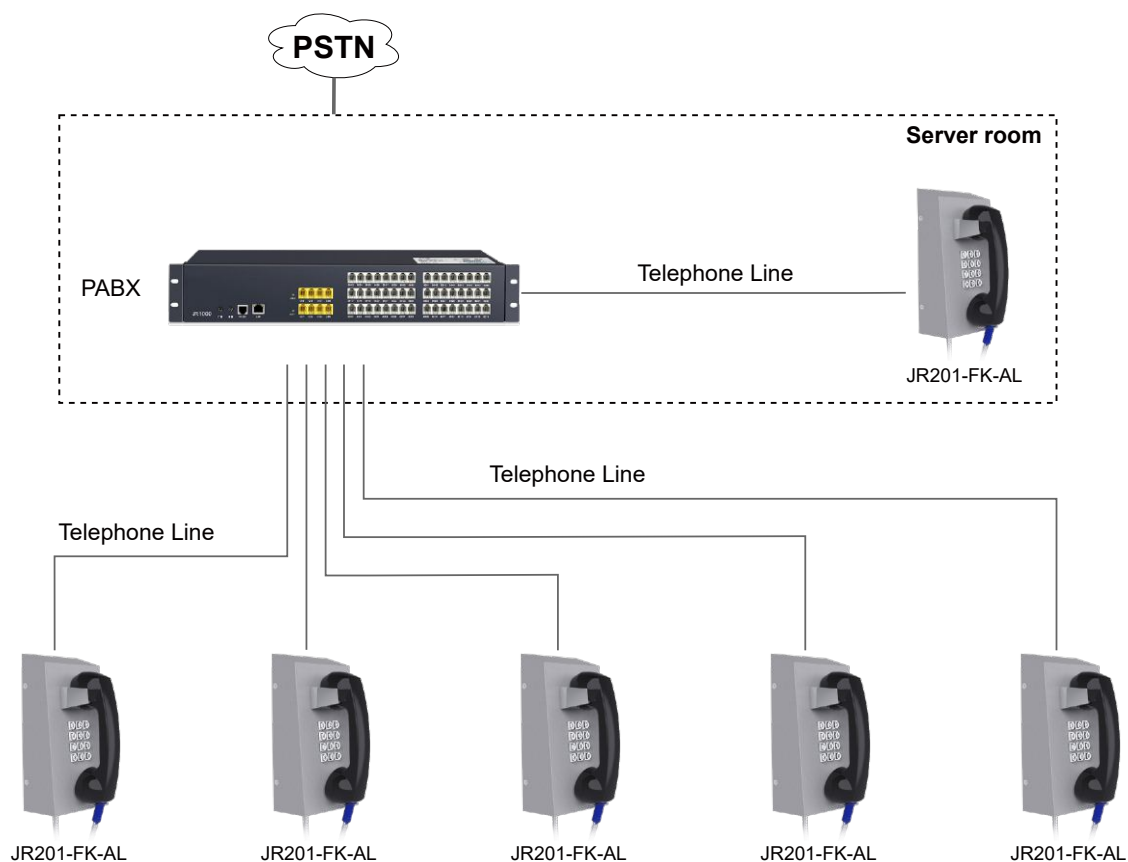
JR-HSA-10/20/25/30/35
Broadcast Horn



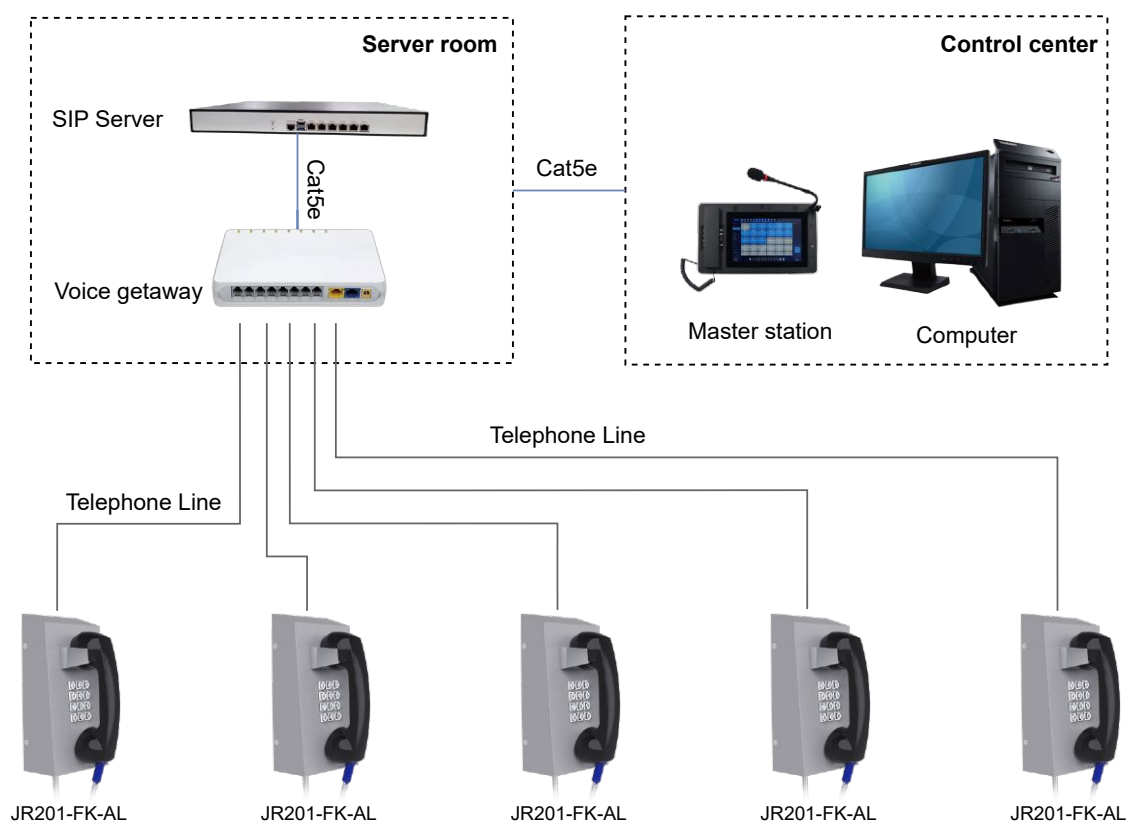
JR-TH-01
Acoustic Hood

APPLICATION

- 1 Analog telephone connect to the PABX and call outside lines through the PSTN



- 2 Analog telephone connects to voice gateway, converts analog signal to SIP signal, and is applied in SIP system



APPLICATION SCENARIO



Metro



Airport



Bus Station



Business center



Prison



Hospital

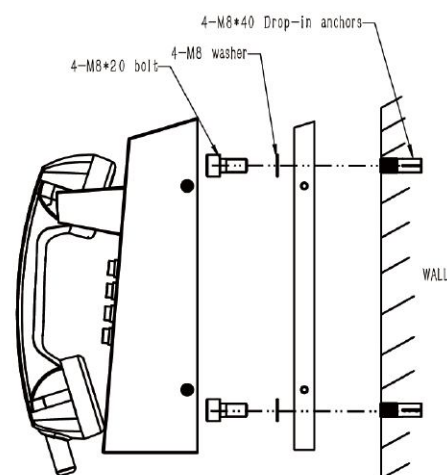
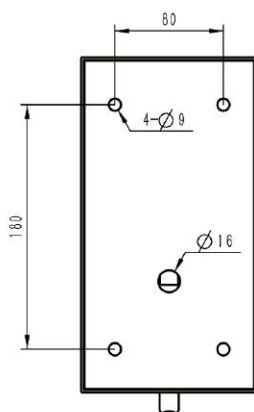
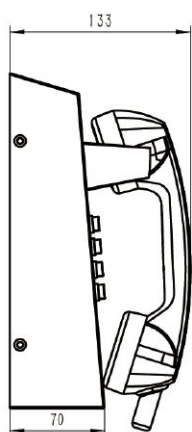
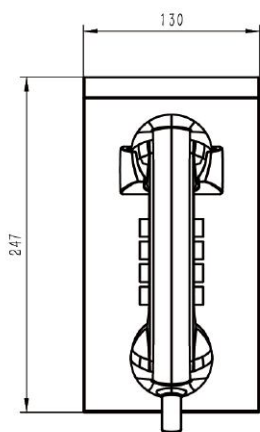


Bank



School

DIMENSIONS



Package	
Unit size	247*130*133 (mm)
Shipping Dimensions	340*220*165 (mm)
Packaging materials	Pearl cotton, carton
Weight	Net weight: 3 KG / Gross weight: 4 KG

